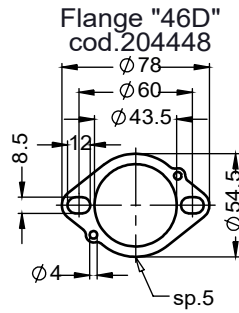
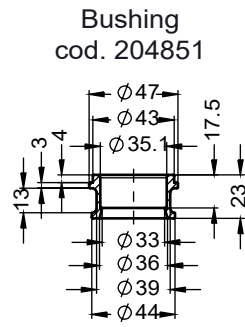


VISTA DA "A"

dB-killer ϕ 38
n.52 Cod.308421801



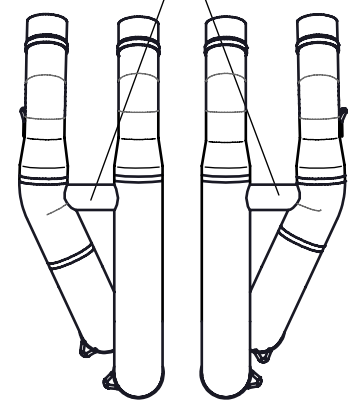
Flange "46D"
cod.204448



Bushing
cod. 204851

VISTA DA "C"

compensating tubes
- Inside hole ϕ 12mm



FACTORY S TITANIUM
 ϕ i 54X270 RHS
Cod.3014337491

Carbon clamp FR2
cod.308448501

Aluminium spacer
Cod. 205771

Knurled collar nut
M6 Cod.200333

Do not use
Aluminium spacer
Cod. 205866

RIDER'S R.H. FOOTBOARD

SGI \square e13 10057 \circledR

Part supplied in a pack. It has to be used only in motorcycles not equipped with lambda sensor:
Plug M18x1.5 h.9 cod.201029

Gasket ϕ 18
Cod. 202185

Final manifold 2/1 RHS s.s
cod. 308282201

Secondary manifold LHS s.s
cod. 308241203

Allen screw M6X25
T.C.E.I.Z.B.
Cod.200586

Aluminium spacer
 ϕ 27X ϕ 6.5
Cod. 205767

Aluminium spacer
 ϕ 20X ϕ 8.5xh3
Cod. 204785

Bracket S.s
Prod. cod.088482001
Purch cod.205864

Secondary manifold RHS s.s
cod. 308241204

Primary manifold LHS RHS s.s
cod. 308241202

Primary manifold LHS s.s
cod. 308241201

12x Short helical
spring tensile
cod. 303949001

ART. 8483ST

YAMAHA YZF - R6

FULL SYSTEM 4/2/1 - FACTORY - TITANIUM LIMITED EDITION - APPROVED