

---

## ANNEXES

---

**Annexe 1** : Localisation sur fond cadastral

**Annexe 2** : Plan de phasage d'exploitation

**Annexe 3** : Plan de phasage – Garanties Financières

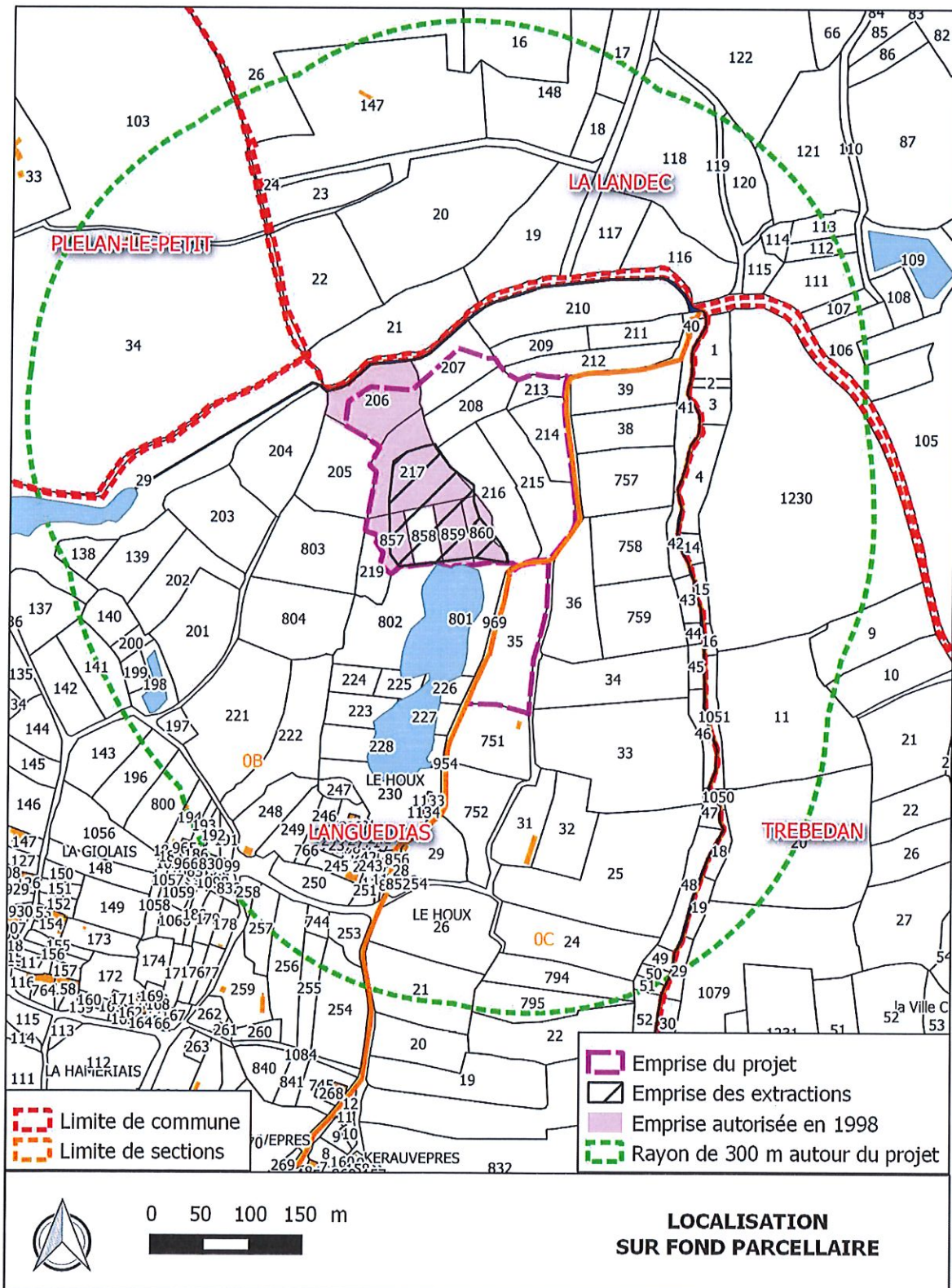
**Annexe 4** : Plan de remise en état

**Annexe 5** : Plan de localisation des mesures de limitation des impacts sur le voisinage

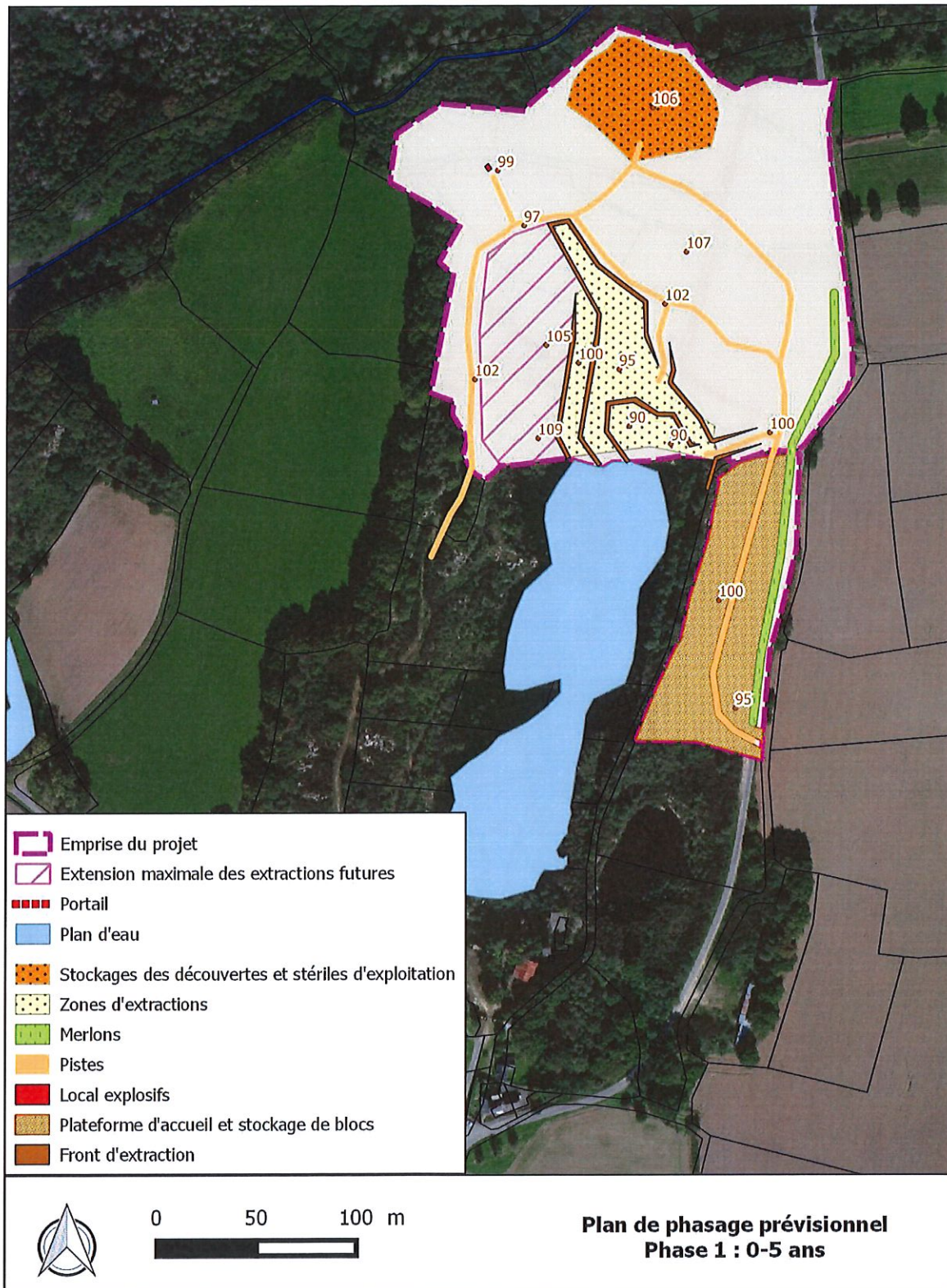
**Annexe 6** : Plan de localisation des mesures d'évitement, de réduction et de compensation des impacts faune-flore

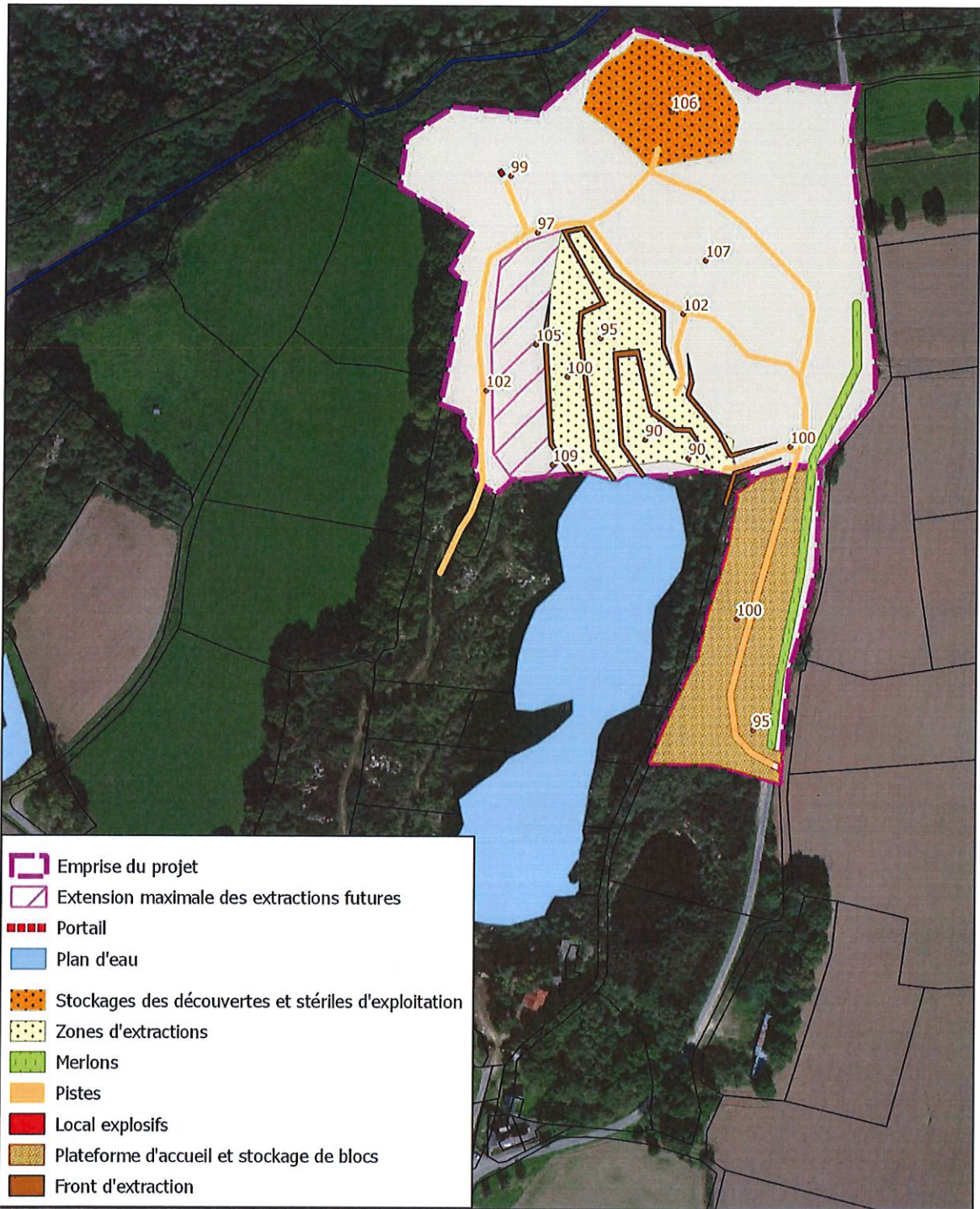







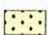





# Annexe 1 : Localisation sur fond cadastral




## Annexe 2 : Plan de phasage d'exploitation






-  Emprise du projet
-  Extension maximale des extractions futures
-  Portail
-  Plan d'eau
-  Stockages des découvertes et stériles d'exploitation
-  Zones d'extractions
-  Merlons
-  Pistes
-  Local explosifs
-  Plateforme d'accueil et stockage de blocs
-  Front d'extraction



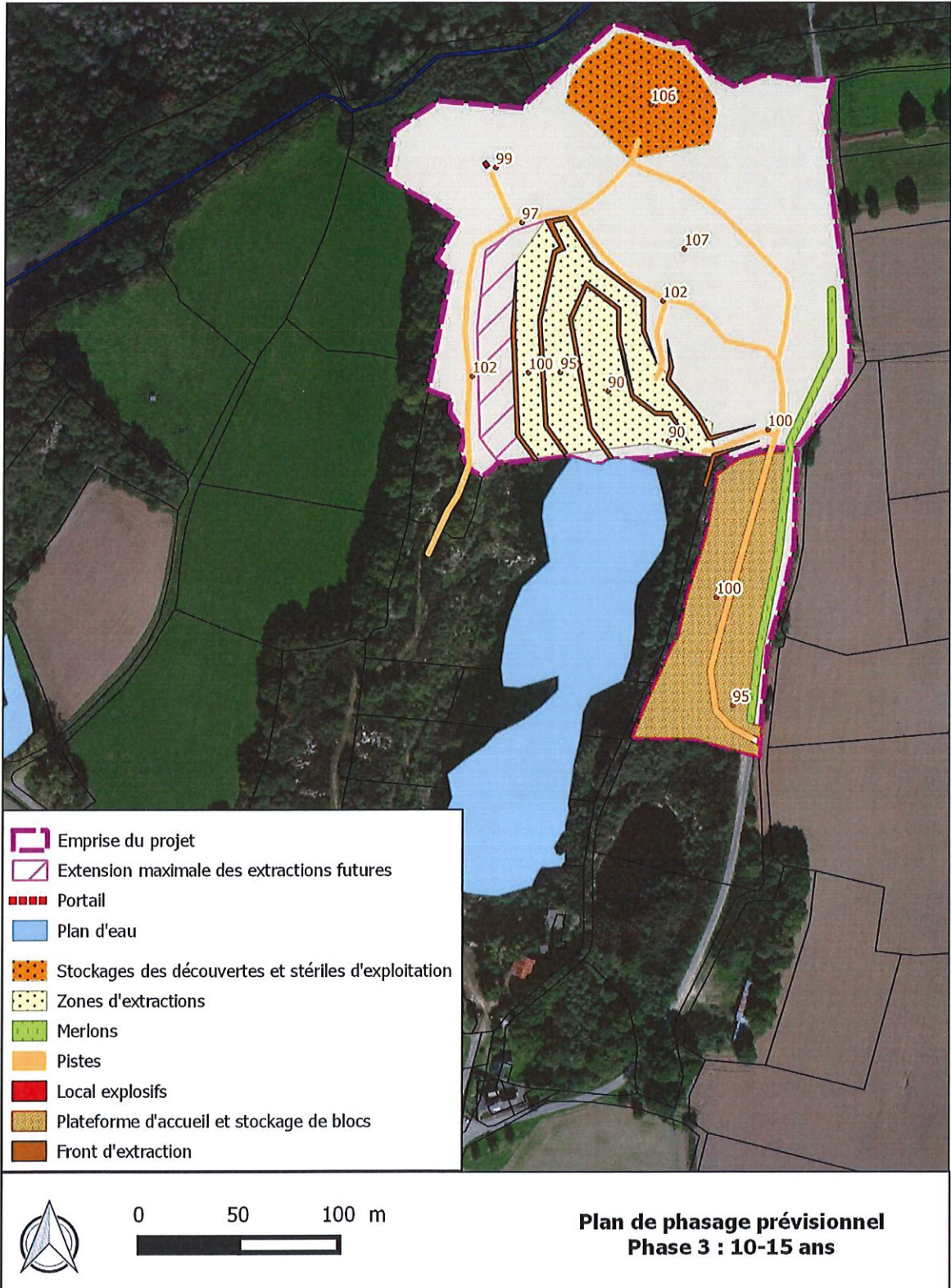
0











50

100 m



**Plan de phasage prévisionnel**  
**Phase 2 : 5-10 ans**

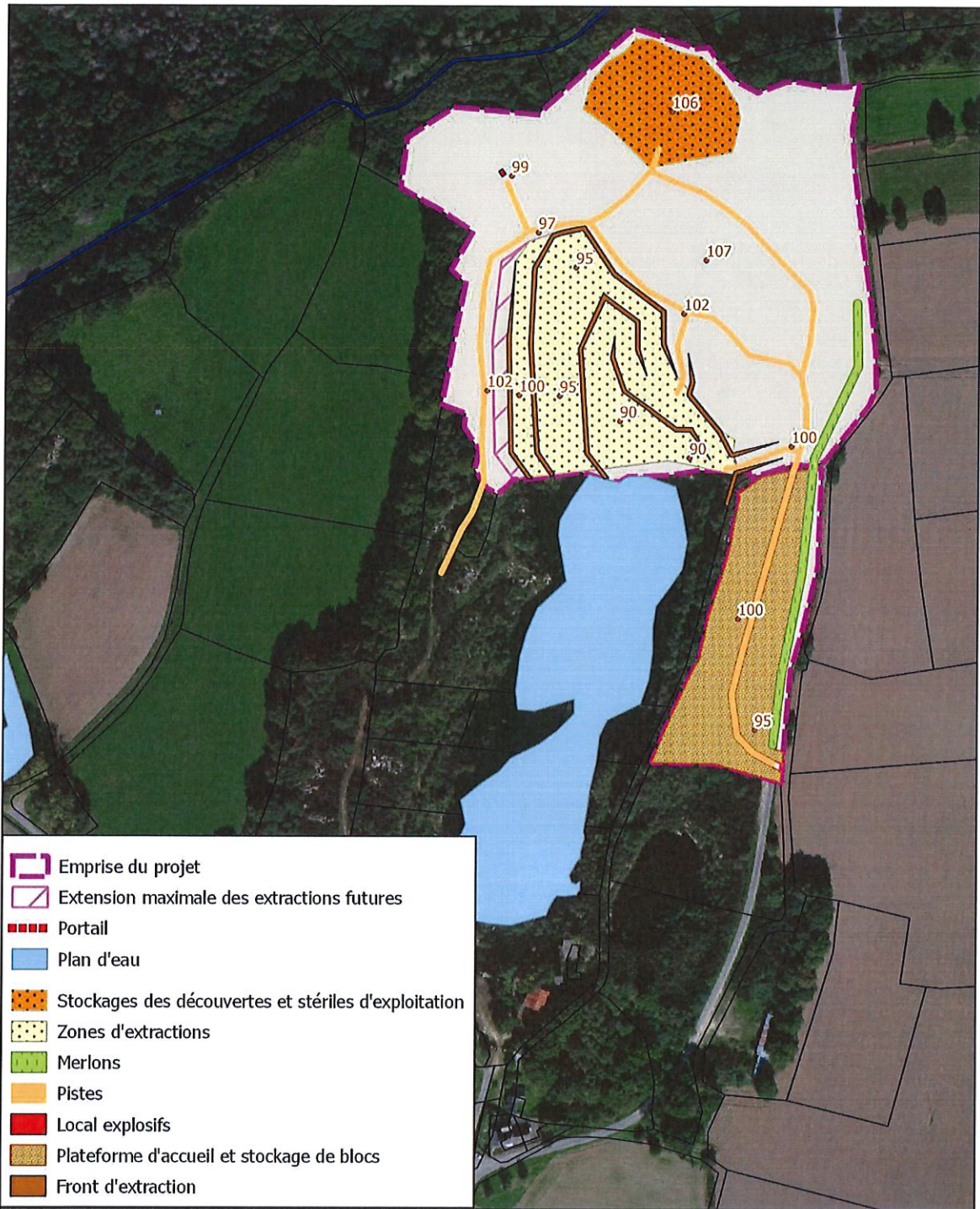


-  Emprise du projet
-  Extension maximale des extractions futures
-  Portail
-  Plan d'eau
-  Stockages des découvertes et stériles d'exploitation
-  Zones d'extractions
-  Merlons
-  Pistes
-  Local explosifs
-  Plateforme d'accueil et stockage de blocs
-  Front d'extraction



0      50      100 m

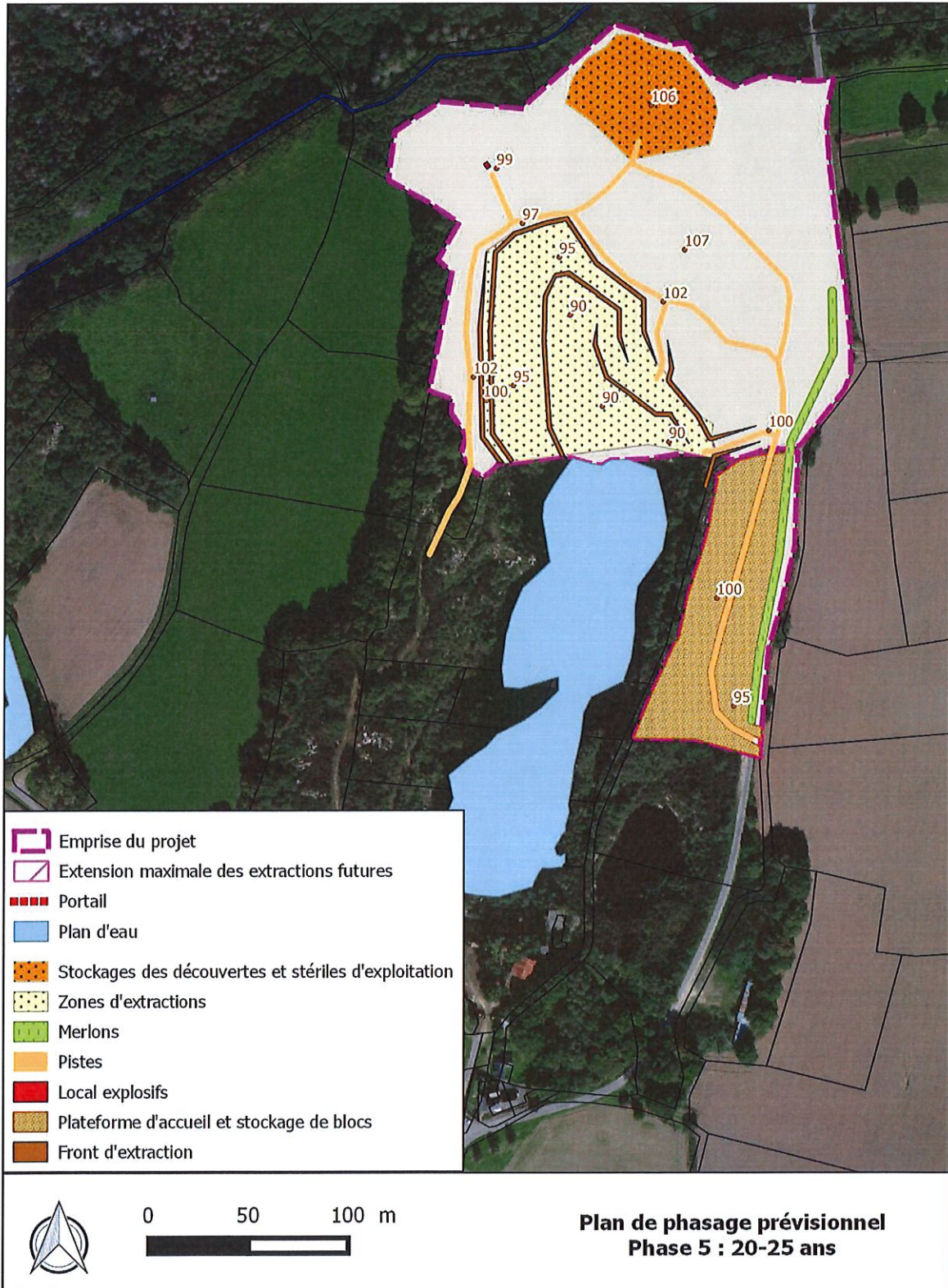




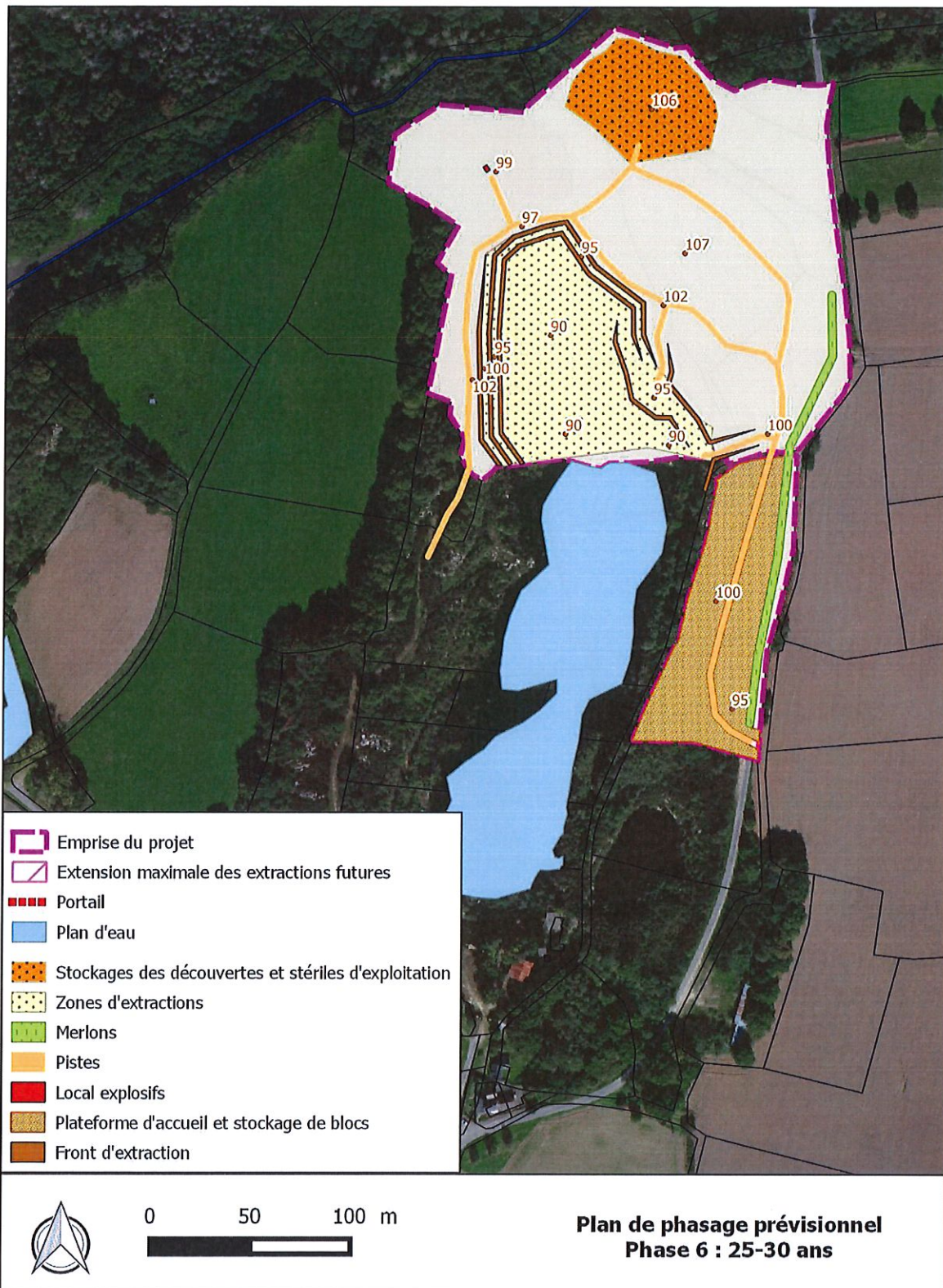
0 50 100 m



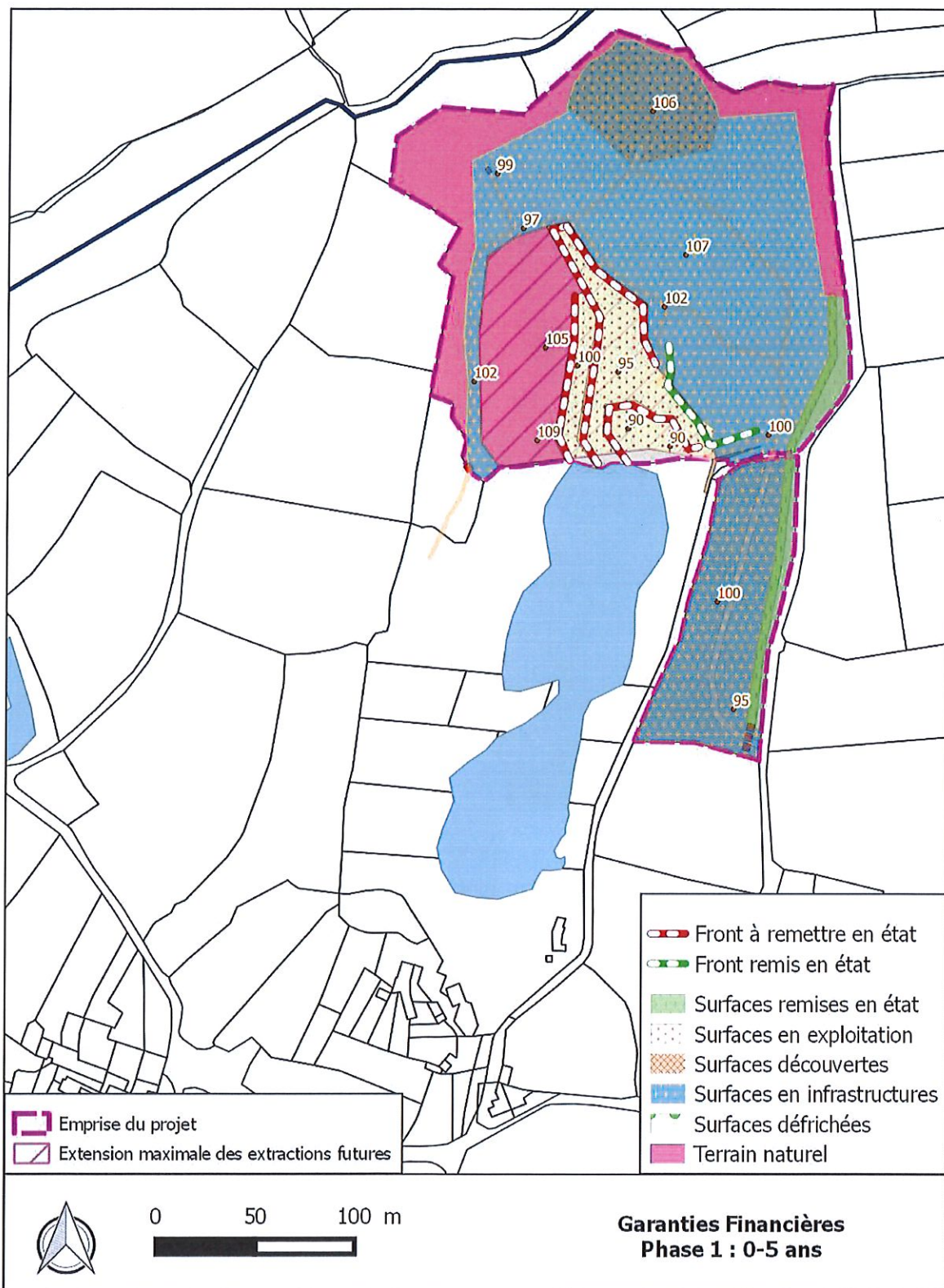
**Plan de phasage prévisionnel  
Phase 4 : 15-20 ans**

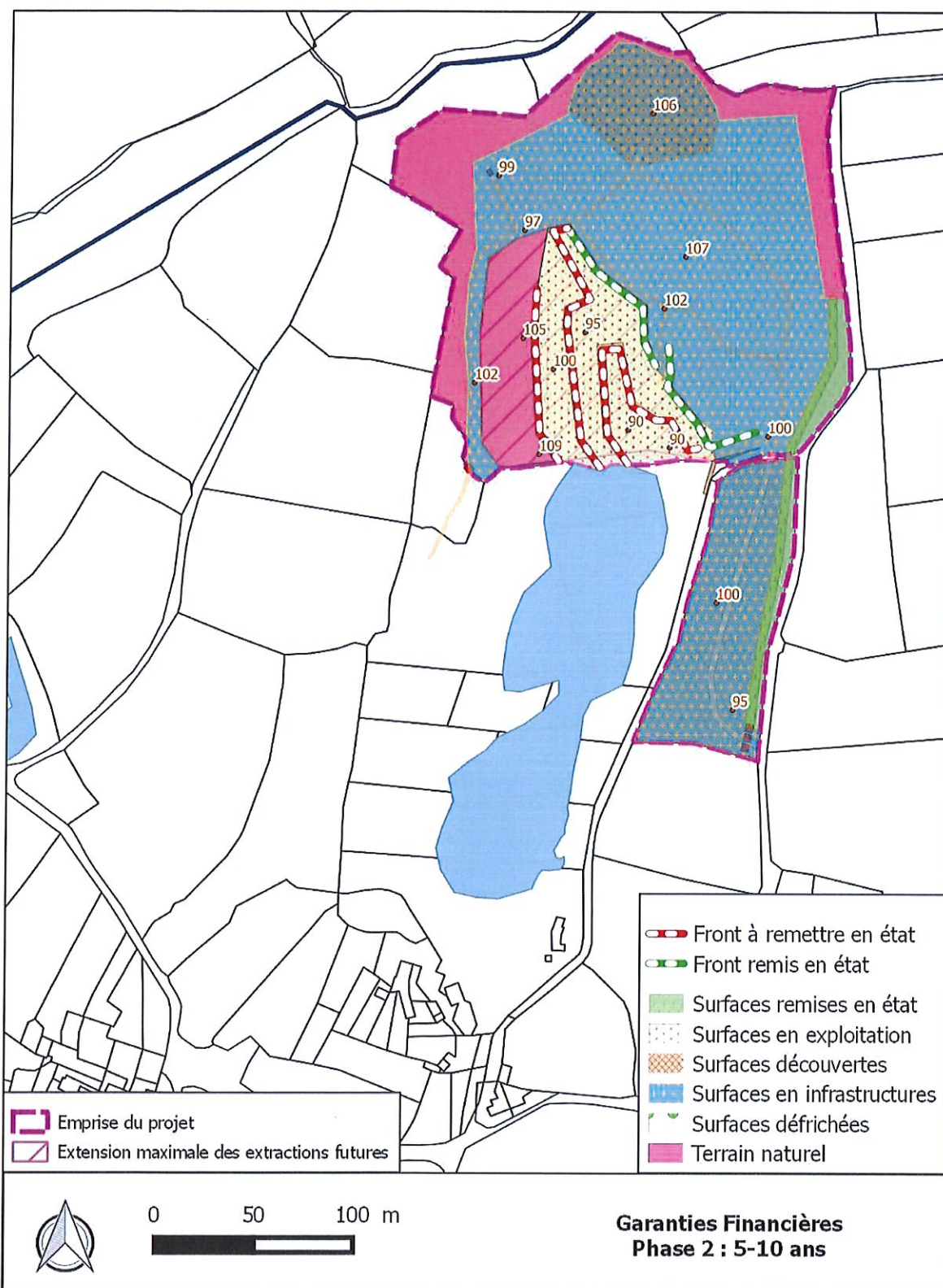


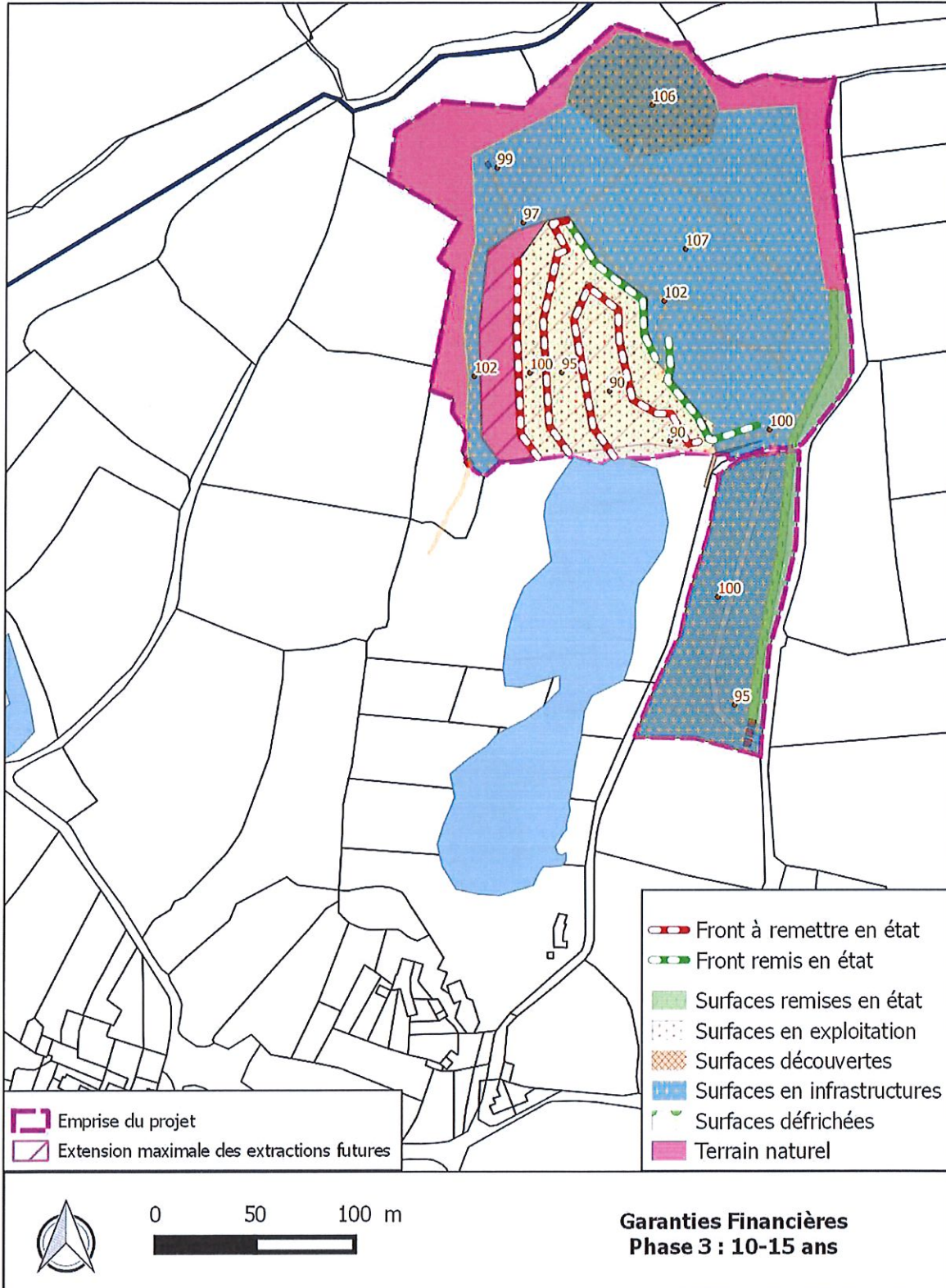


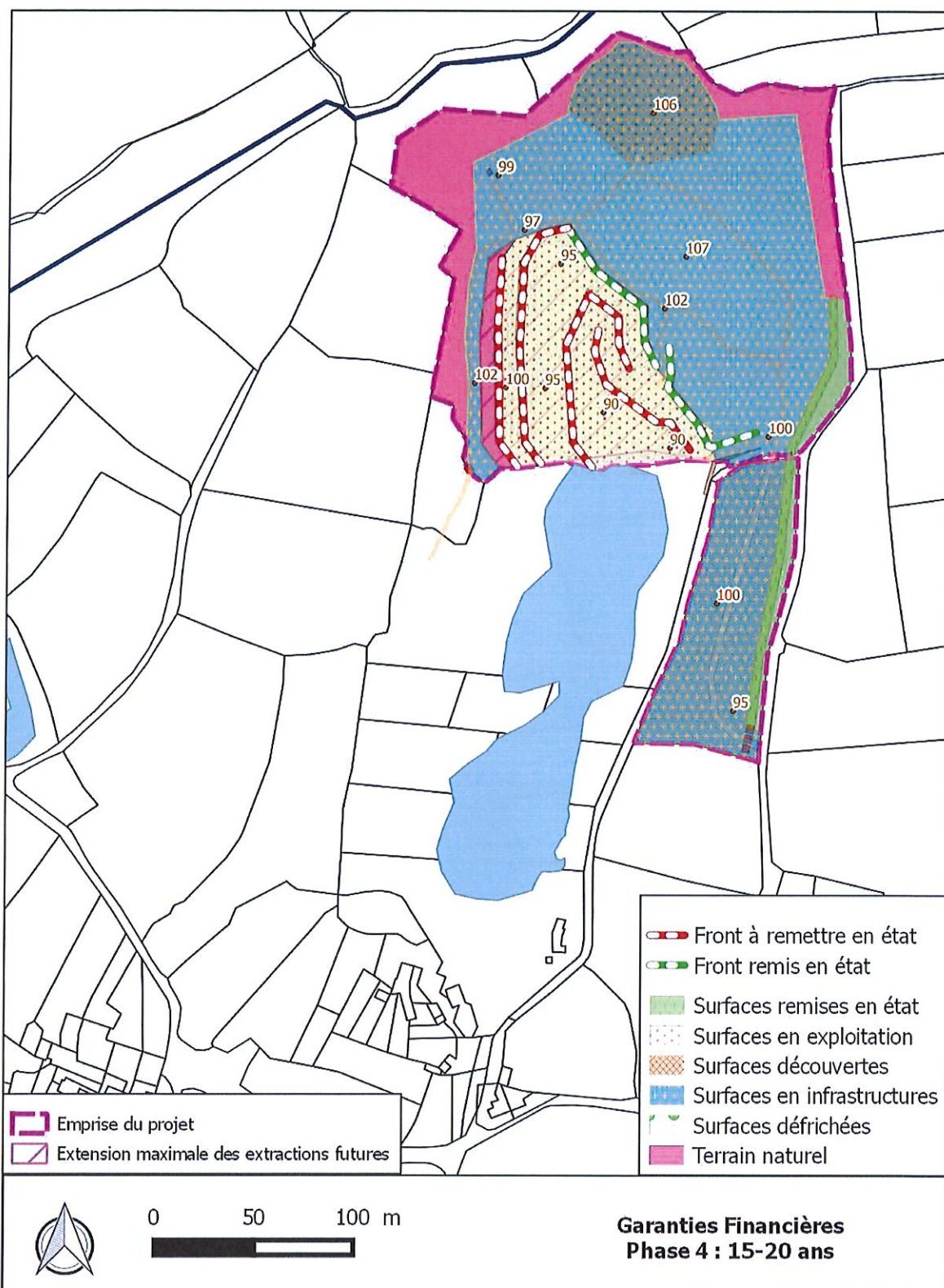


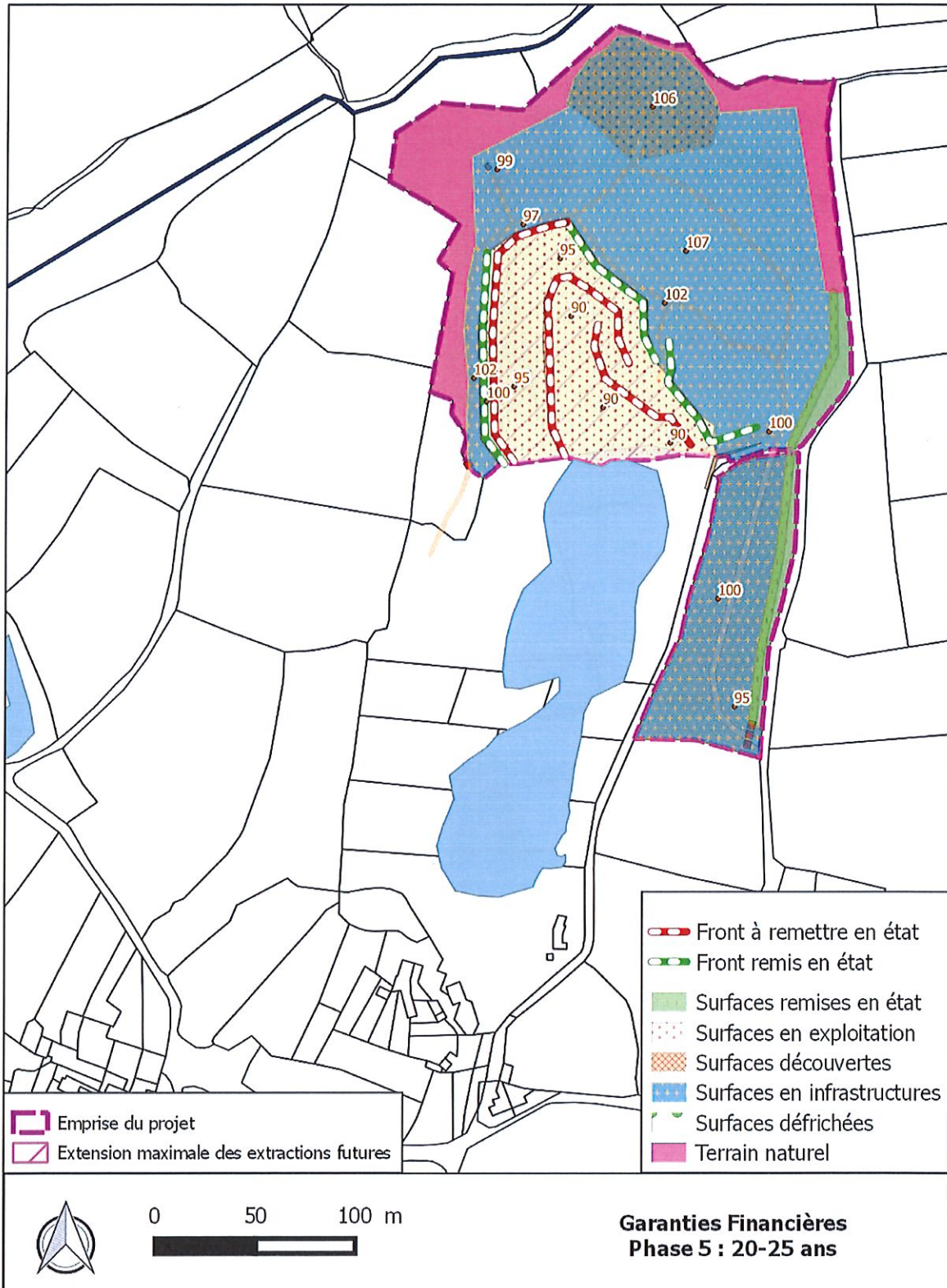
### Annexe 3 : Plan de phasage – Garanties Financières

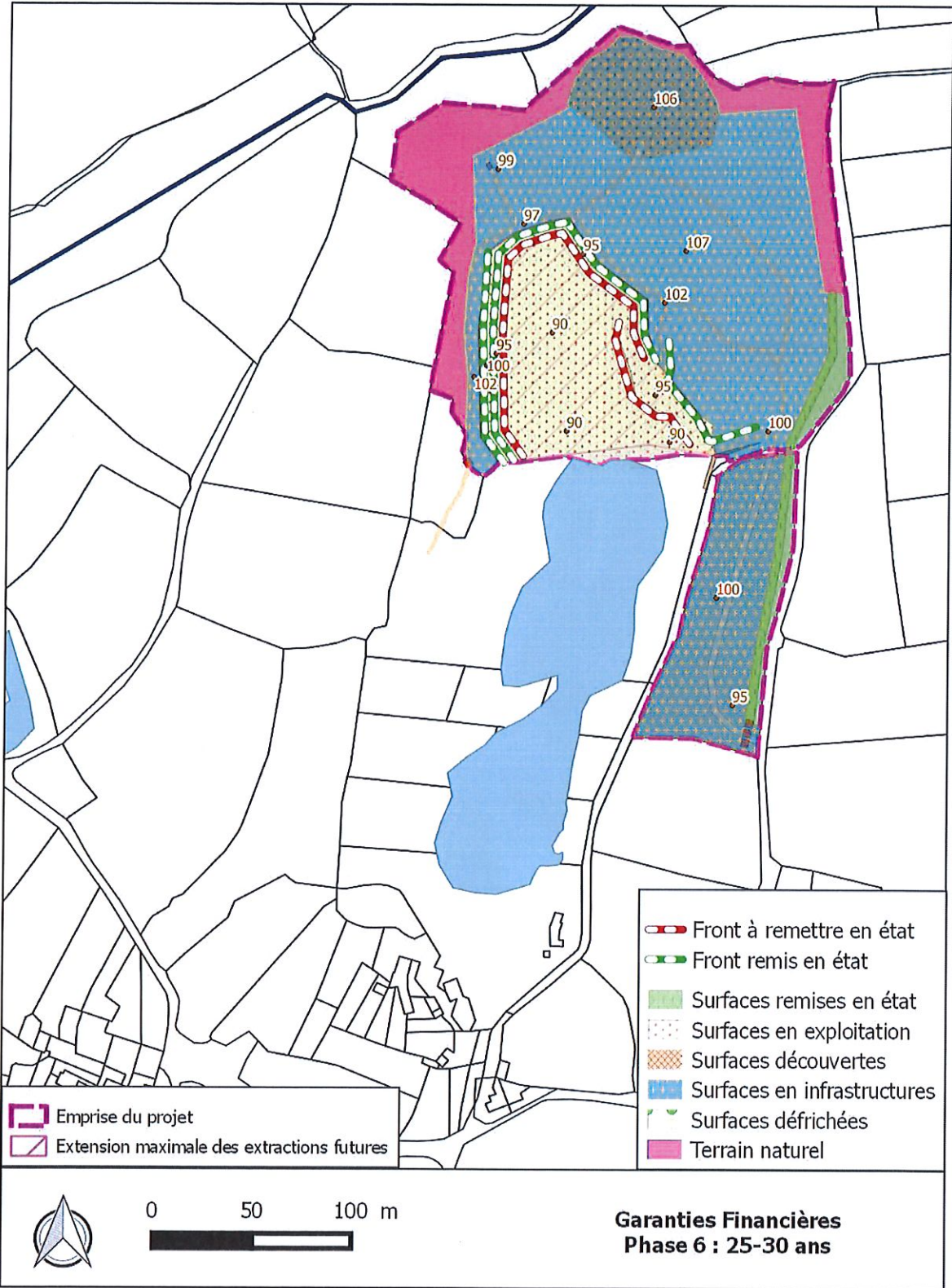




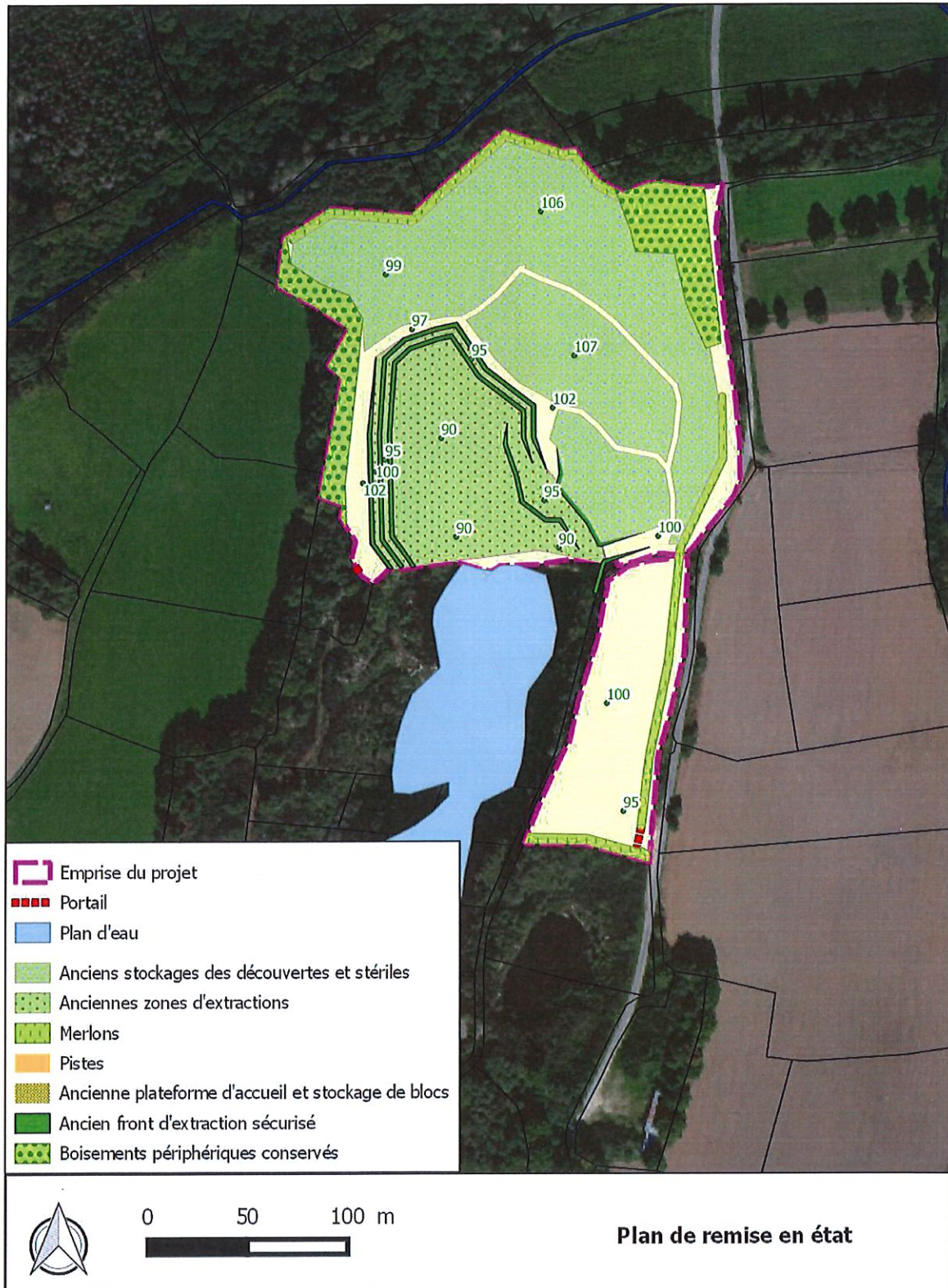






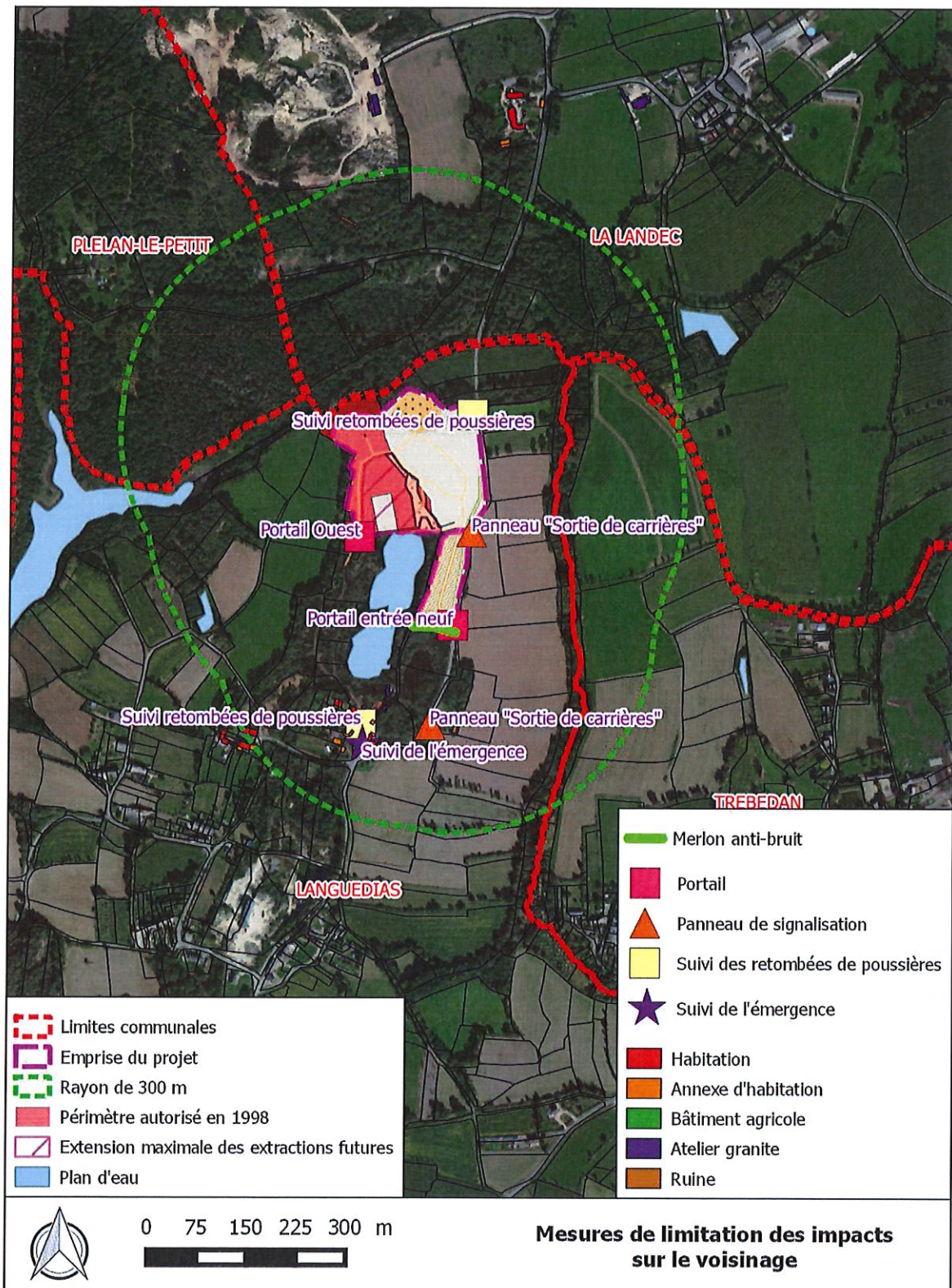


## Annexe 4 : Plan de remise en état





Annexe 5 : Plan de localisation des mesures de limitation des impacts sur le voisinage



**Annexe 6 : Plan de localisation des mesures d'évitement, de réduction et de compensation des impacts faune-flore**

